

8-ZONE WIFI INDOOR IRRIGATION CONTROLLER

MODEL NO. HIC801W



Pairing

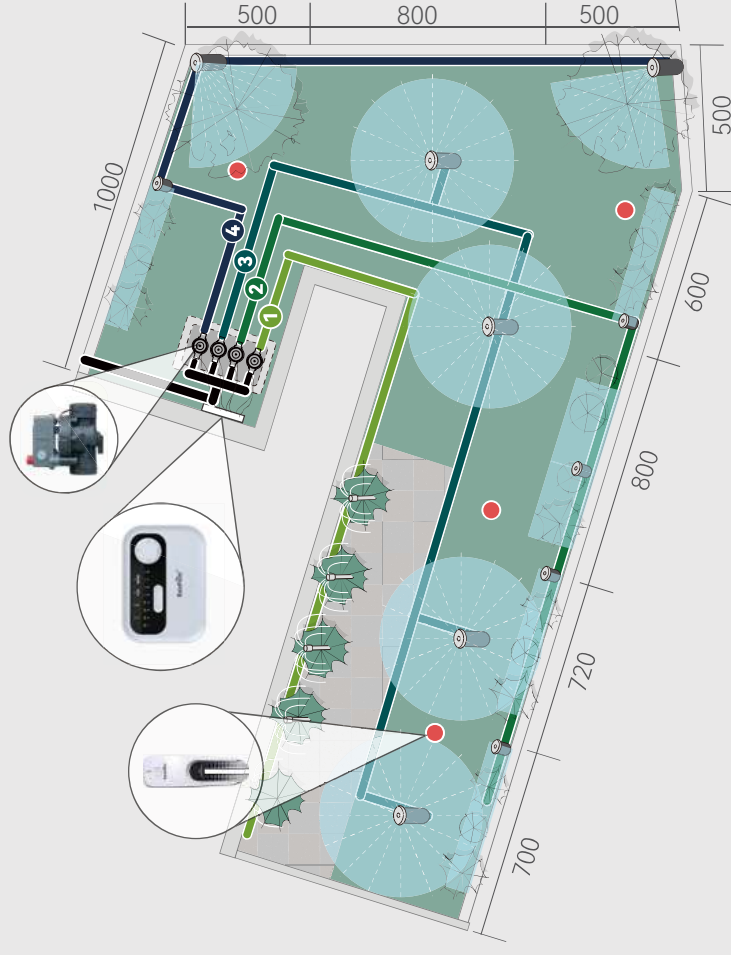


ACTUATOR SOLENOID VALVE

GARDEN IRRIGATION SYSTEM DESIGN

- ① POT
- ② Bushes
- ③ Lawn

230M²

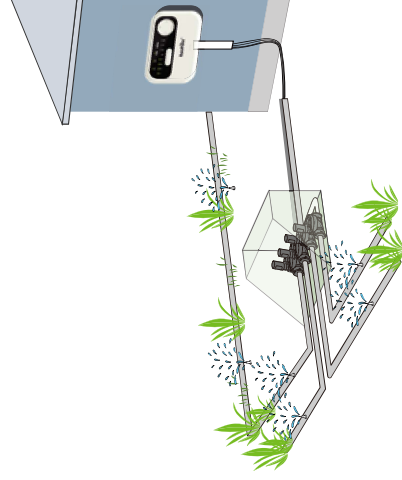


Model	BIV231-25A
Model Type	Electronic Valve
Size(mm)	125x80x115
Applicable Controller	ITC1200/HIC801W
CONNECTIONS	BSP/NPT
Operation pressure (bar)	0.2-10 bar
Flow rate (m ³ /h)	15 m ³ /h
Voltage(V)	AC Latching 12-40V
Pulse Width (msec)	260

Features	<ul style="list-style-type: none"> • Set different manual schedule for each valve on the App • Remotely track the valve status • Weather forecast display on the App
----------	---

Specifications	<ul style="list-style-type: none"> • Whole watering calendar • Test function for valve
Applied APP	RainPoint home
Type	WiFi
With wired/wireless sensors	Wired rain sensor/wireless soil sensor
Controlled valve	8xAC 24V valves and 1 master valve
Manual Watering duration	1-120 min
Watering duration	Every minutes,every 1-4 hours
Compatible sub-devices	HCS021FRF
Gateway or not	No gateway
Waterproof	IP65
Power	AC 24V

Packaging	<ul style="list-style-type: none"> • 12Pcs/Ctn • 203x138x110mm/526x334x320mm • 1.2KG/14.5KG
-----------	--



Products Included in the Solution

<p>8-Zone WiFi Irrigation Controller HIC801W</p>	<p>Garden Use AC Valve BIV231-25A</p>	<p>17L Irrigation Valve Box</p>	<p>Drip Irrigation Accessories DK-402</p>
<p>Fixed Angle Nozzle 360° Non-adjustable</p>	<p>Fan Spray Nozzle 2.7x5.5m Long strip in the middle</p>	<p>Fan Spray Nozzle 1.2x5.0m Long strip in the right corner</p>	<p>Soil Moisture Sensor</p>