

## CSBP-B(D)

### Intelligent Water Booster Pump

#### Operating Limits

Ambient temperature: 40 °C

Liquid temperature < 75 °C

#### Motor

Protection: IPX5

Insulation: Class F

Continuous service: S1

Voltage frequency: 160-260V/50/60Hz

#### Material

Pump body: SUS 304 stainless steel

Impeller: Plastic/SUS 304 stainless steel

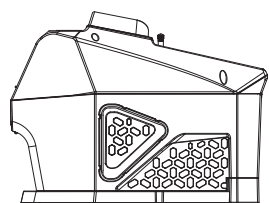
Motor shaft: SUS 304 stainless steel

Mechanical seal: Graphite/Silicon Carbide

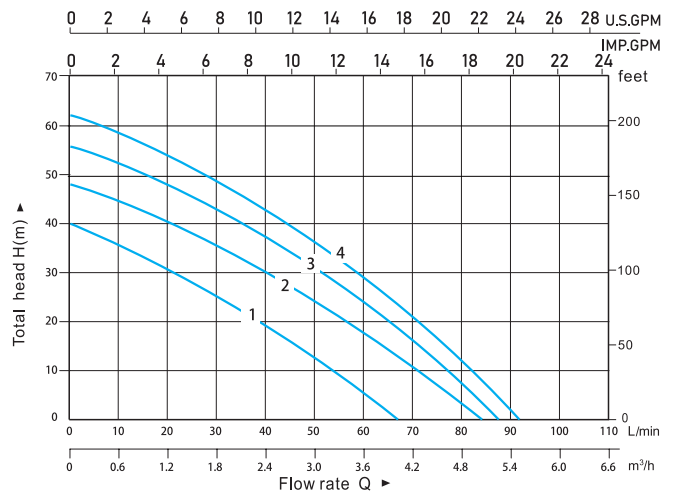
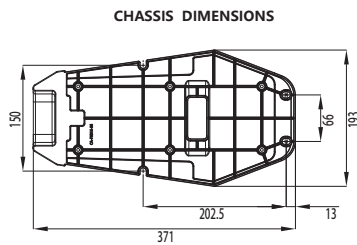


#### Applications

Multi-function water supply system, it applies to apartment, villa, water and pipeline boosting, garden irrigation, floor heating, pipeline heating and hot water circulation.



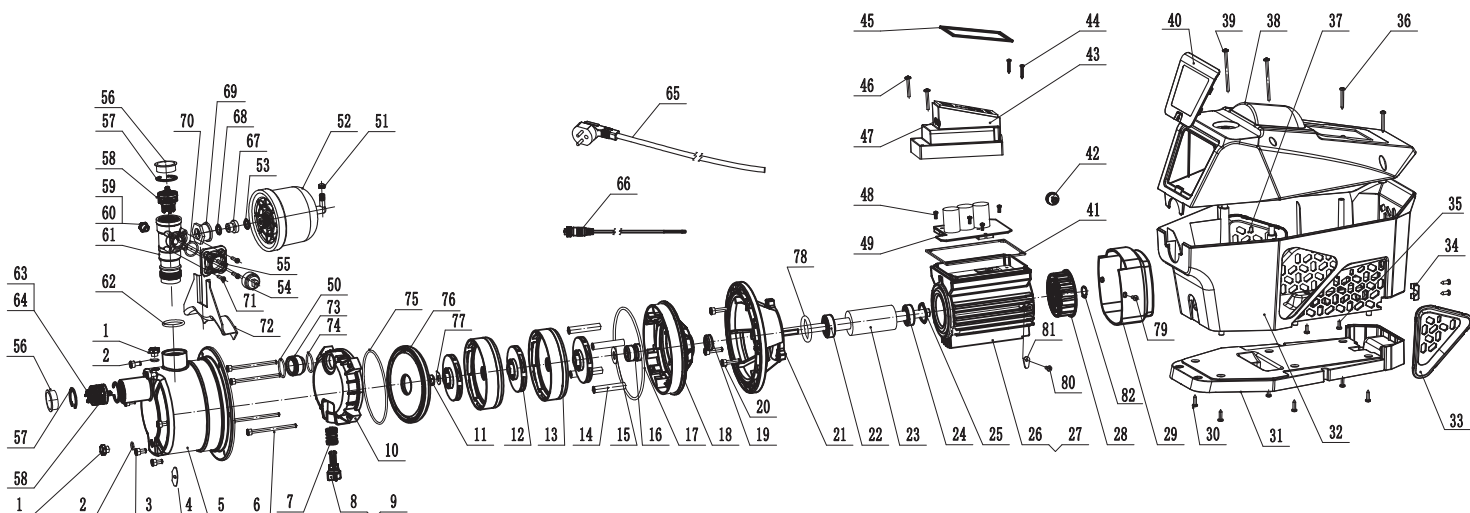
PRODUCT DIMENSIONS: 401x219x299  
Inlet/outlet: 1" x 1"



#### Technical Data

MODEL	POWER(P2)		INLET/OUTLET	MAX. FLOW (m³/h)	MAX. HEAD (m)	MAX. SUCT (m)	G.W (kg)	PACKING DIMENSION/UNIT (mm)	QTY/20'GP (UNIT)	CURVE
	KW	HP								
CSBP370-25-B(D)	0.37	0.5	1"×1"	4	40	8	9.8	455*260*365	650	1
CSBP550-24-B(D)	0.55	0.75	1"×1"	5	48	8	10.3	455*260*365	650	2
CSBP750-30-B(D)	0.75	1	1"×1"	5.2	56	8	10.5	455*260*365	650	3
CSBP900-30-B(D)	0.9	1.2	1"×1"	5.5	62	8	11.8	455*260*365	650	4

## EXPLODED DIAGRAM



## EXPLOSION CHART

NO	PN	Part name	NO	PN	Part name	NO	PN	Part name
1	CSBP550-01	water filling nozzle bolt	29	CSBP550-29	fan cover	57	CSBP550-51	internal circlip
2	CSBP550-02	O-ring	30	CSBP550-30	self-tapping screw	58	CSBP550-52	check valve union
3	CSBP550-03	outer hexagon screw	31	CA-P2314-06	motor plastic shell bottom side	59	CSBP550-53	temperature sensor
4	CSBP550-04	flat washer	32	CA-P2314-03	motor plastic shell nether side	60	CSBP550-54	O-ring 6*1.8
5	CSBP550-05	pump body	33	CA-P2314-04	motor plastic shell right side	61	CSBP550-55	Five way fitting
6	CSBP550-06	Hexagon socket screws	34	CSBP550-31	wire clip	62	CSBP550-56	O-ring 35*3.5
7	CSBP550-07	check valve spring	35	CSBP550-32	cross recessed pan head screw	63	CSBP550-57	O-ring 26.3*22
8	CSBP550-08	reflux valve	36	CSBP550-33	self-tapping screw	64	CSBP550-58	1"check valve base
9	CSBP550-09	O-ring	37	CA-P2314-05	motor plastic shell left side	65	CSBP550-59	Power cord
10	CSBP550-10	diffuser	38	CA-P2314-01	motor plastic upper cover	66	CSBP550-60	Daisy chain cable w/ female 3P
11	CSBP550-11	M8 screw	39	CSBP550-34	self-tapping screw	67	CSBP550-61	Connecting screw
12	CSBP550-12	impeller	40	CA-P2314-02	motor plastic cover	68	CSBP550-62	O-ring 10*2.65
13	CSBP550-13	dam-board	41	CSBP550-35	leather gasket	69	CSBP550-63	Nut
14	CSBP550-14	supporting	42	CSBP550-36	wire guard	70	CSBP550-64	O-ring 20*1.8
15	CSBP550-15	flat washer	43	CSBP550-37	control box cover-part1	71	CSBP550-65	cross recessed pan head screw
16	CSBP550-16	Mechanical Seal	44	CSBP550-38	self-tapping screw	72	CSBP550-66	Bracket
17	CSBP550-17	O-ring	45	CSBP550-39	leather gasket	73	CSBP550-67	Inlet guide pipe
18	CSBP550-18	dam-board	46	CSBP550-40	cross recessed pan head screw	74	CSBP550-68	O-ring 25*2.5
19	CSBP550-19	water fender	47	CSBP550-41	sealing gasket	75	CSBP550-69	O-ring 103*2
20	CSBP550-20	outer hexagon screw	48	CSBP550-42	cross recessed pan head screw	76	CSBP550-70	impeller cover
21	CSBP550-21	bracket	49	CSBP550-43	controller panel	77	CSBP550-71	flat washer 12*24*0.5
22	CSBP550-22	bearing 6202-RS	50	CSBP550-44	O-ring 25*2.5	78	CSBP550-72	O-ring 34*2.5
23	CSBP550-23	rotors	51	CSBP550-45	Valve cap	79	CSBP550-73	cross recessed pan head screw
24	CSBP550-24	bearing 6201-RS	52	CSBP550-46	Pressure tank 1L	80	CSBP550-74	cross recessed pan head screw
25	CSBP550-25	wave spring	53	CSBP550-47	O-ring	81	CSBP550-75	Grounding mark Ø4.2
26	CSBP550-26	motor inner shell	54	CSBP550-48	pressure sensor	82	CSBP550-76	Shaft retaining ring
27	CSBP550-27	winding core	55	CSBP550-49	pressure sensor fixed mount			
28	CSBP550-28	fan	56	CSBP550-50	dust cap			